

3-7  
BROOK  
STREET

MAYFAIR

FLOORPLANS

---

# CLUB FACILITIES

- Area: 1,582 sq. ft
- Floor to ceiling height: 2.5m
- Separate male and female changing facilities
- State-of-the-art electrical appliances
- Vanity units
- 28 ventilated lockers
- Basement level access via rear of the building
- Professional grade kitchen with dumb waiter accessing all floors

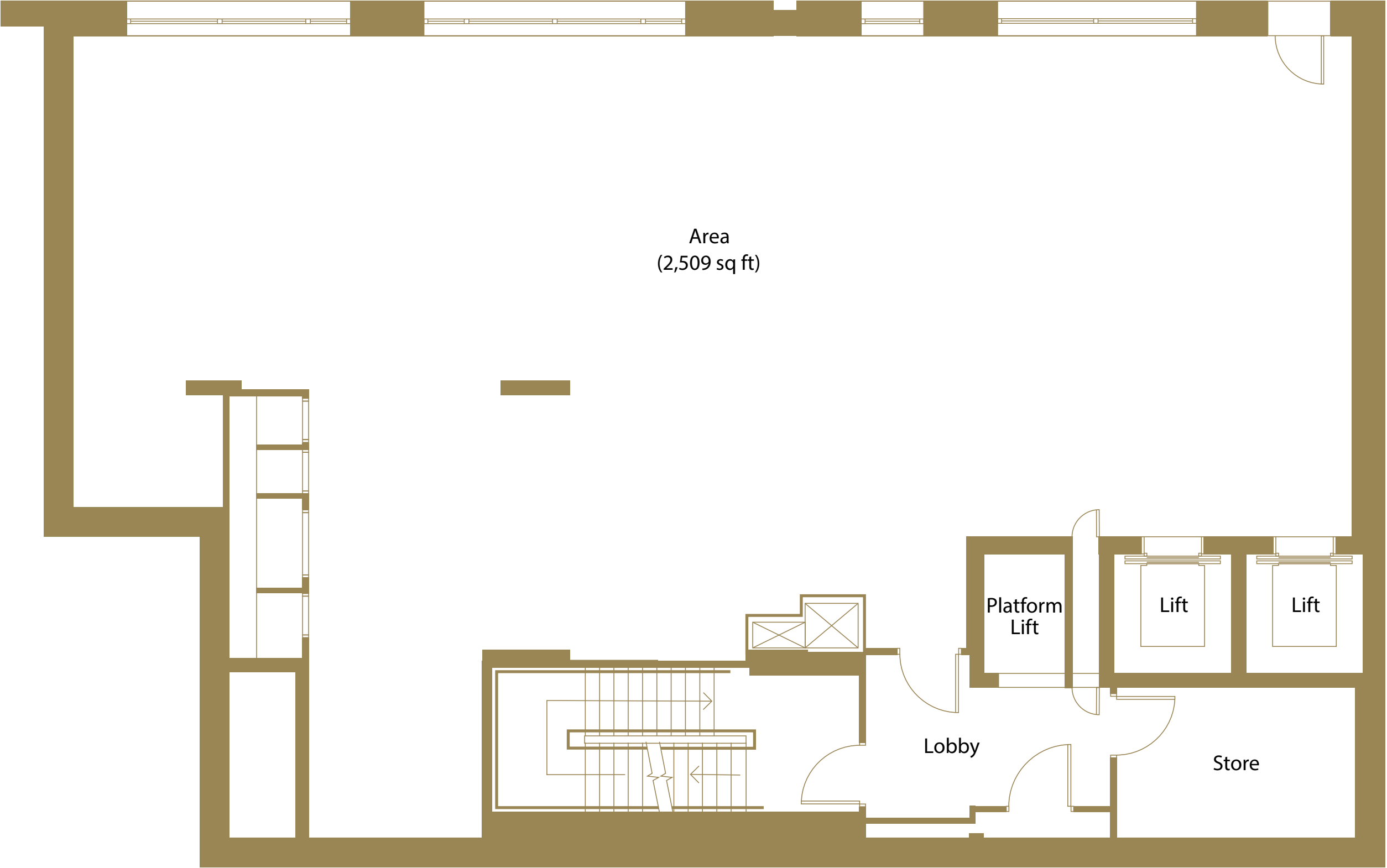
Brook Street



# LOWER GROUND FLOOR

- Area: 2,509 sq. ft
- Floor to ceiling height: 4.0m slab to slab
- Finished to shell and core
- Bronze surrounds and frames to windows
- Platform lift serving ground to sub basement
- Two eight-person lifts with secure fob access, brushed bronze panels and mirror, natural stone flooring and a fully lit diffused feature panel

Brook Street



Area  
(2,509 sq ft)

Platform  
Lift

Lift

Lift

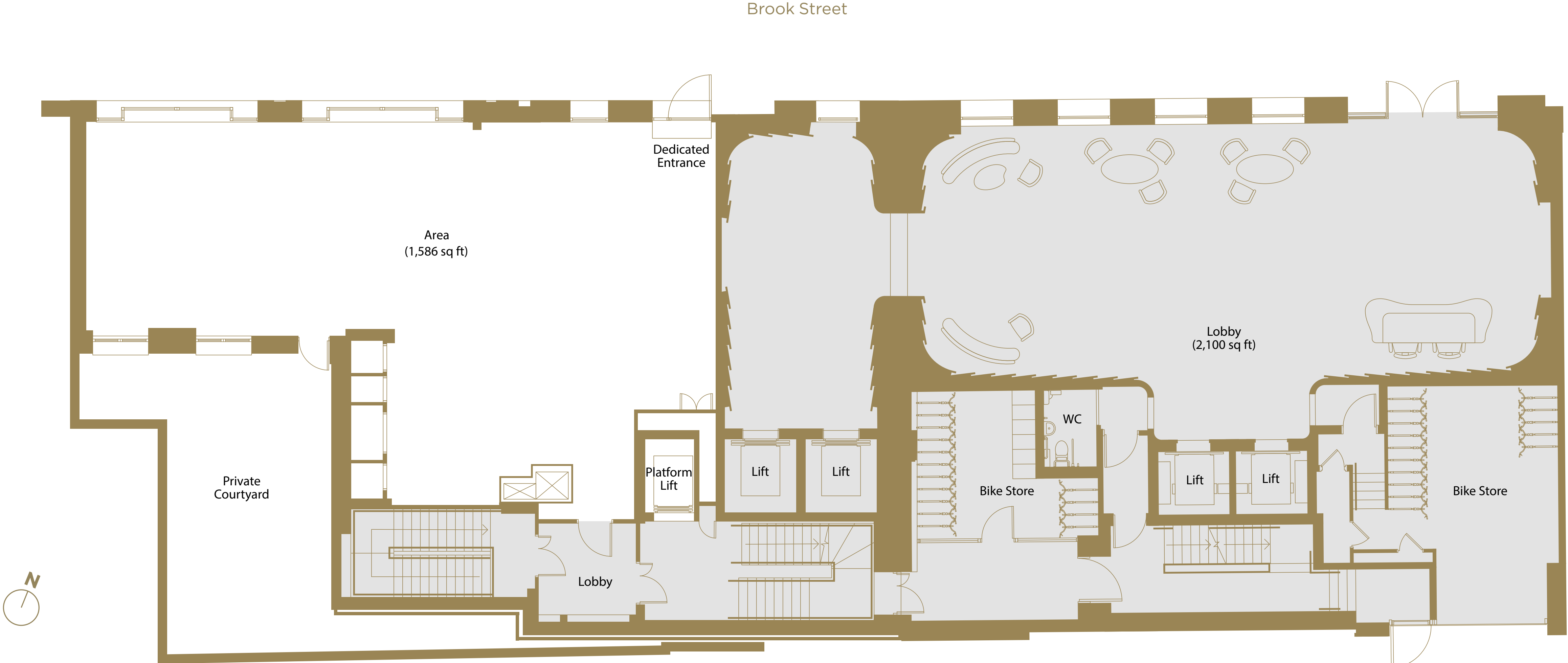
Lobby

Store



# GROUND FLOOR

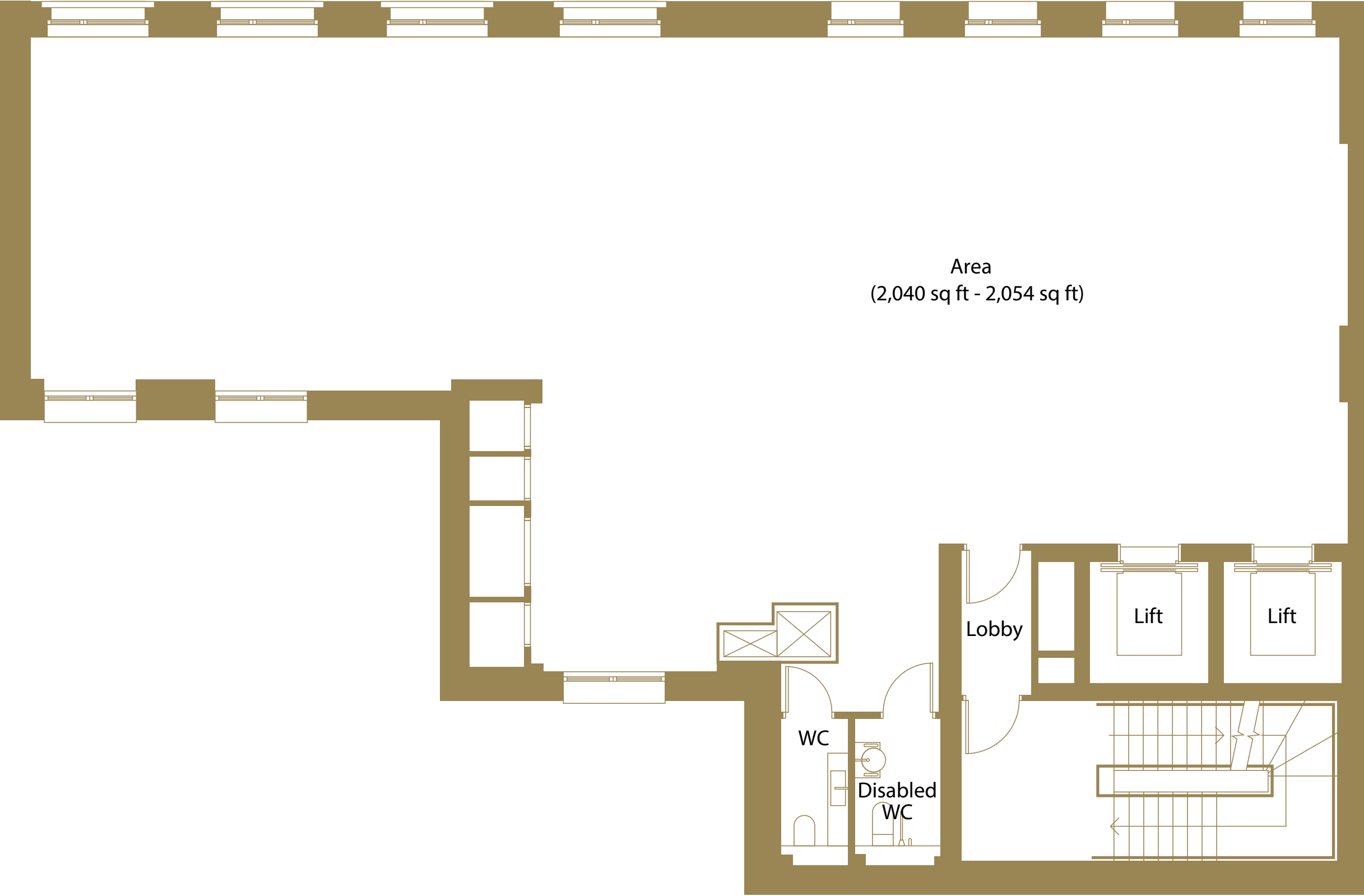
- Area: 1,586 sq. ft
- Floor to ceiling height: 3.36m slab to slab
- Finished to shell and core
- Bronze surrounds and frames to windows
- B1 and A1 use on ground and lower ground
- Two eight-person lifts with secure fob access, brushed bronze panels and mirror, natural stone flooring and a fully lit diffused feature panel
- Dedicated entrance off of Brook Street
- Access to dumb waiter
- Private courtyard



# FIRST - FOURTH FLOOR

- Area: 2,040 - 2,054 sq. ft
- Floor to ceiling height: 2.6m (Cat A finish)
- Available as Cat A or shell and core
- Bronze surrounds and frames to windows
- Recessed spotlights and recessed strip lighting
- Two WCs on each floor
- Two eight-person lifts with secure fob access, brushed bronze panels and mirror, natural stone flooring and a fully lit diffused feature panel
- Full air conditioning with zone temperature control
- Access to dumb waiter

Brook Street

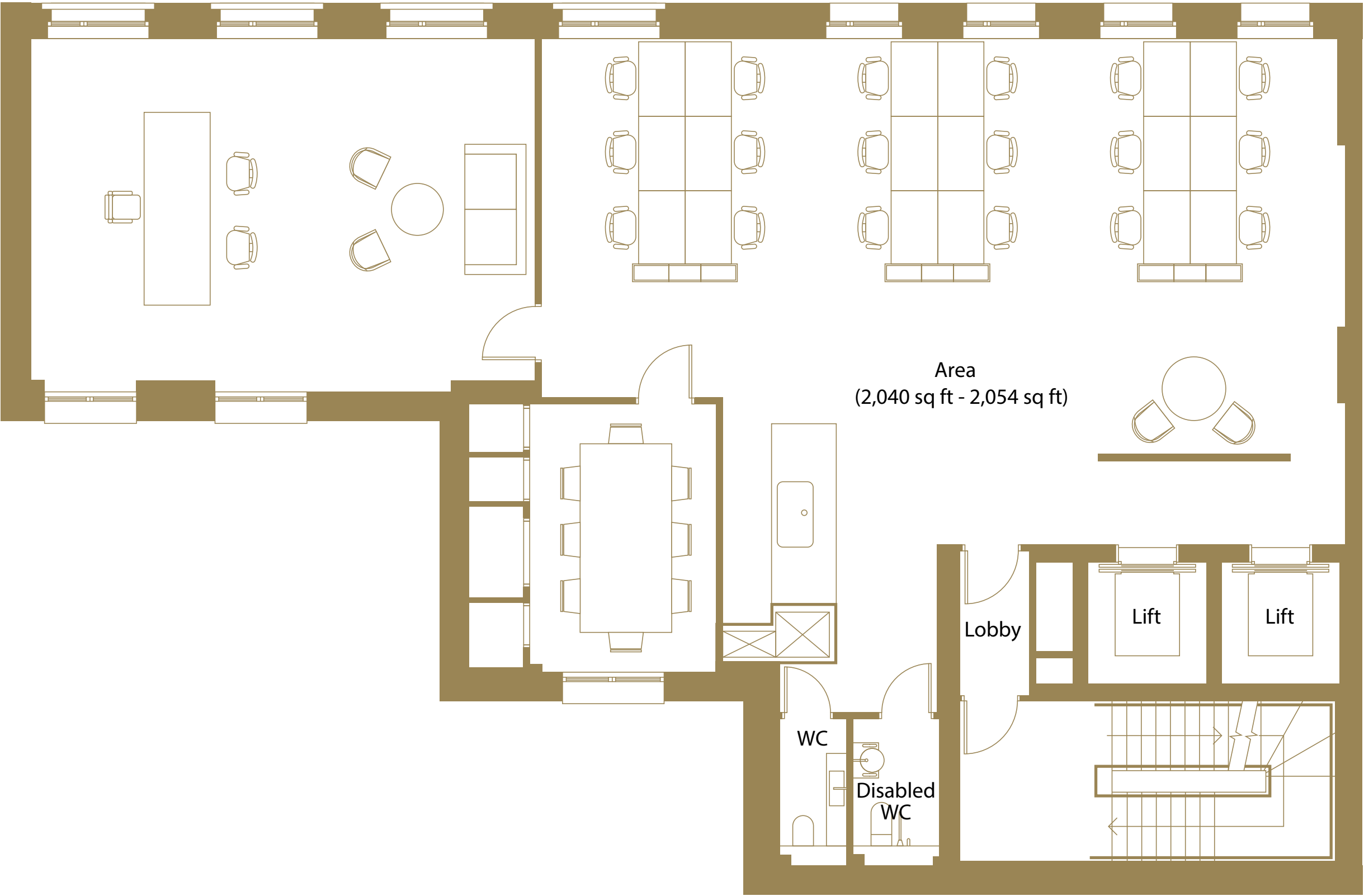


# FIRST - FOURTH FLOOR

(INDICATIVE OPEN-PLAN LAYOUT)

- Area: 2,040 - 2,054 sq. ft
- Floor to ceiling height: 2.6m (Cat A finish)
- Available as Cat A or shell and core
- Bronze surrounds and frames to windows
- Recessed spotlights and recessed strip lighting
- Two WCs on each floor
- Two eight-person lifts with secure fob access, brushed bronze panels and mirror, natural stone flooring and a fully lit diffused feature panel
- Full air conditioning with zone temperature control
- Access to dumb waiter

Brook Street



- 1 x executive office
- 18 x desk spaces
- 1 x boardroom
- 1 x break out area
- 1 x tea point

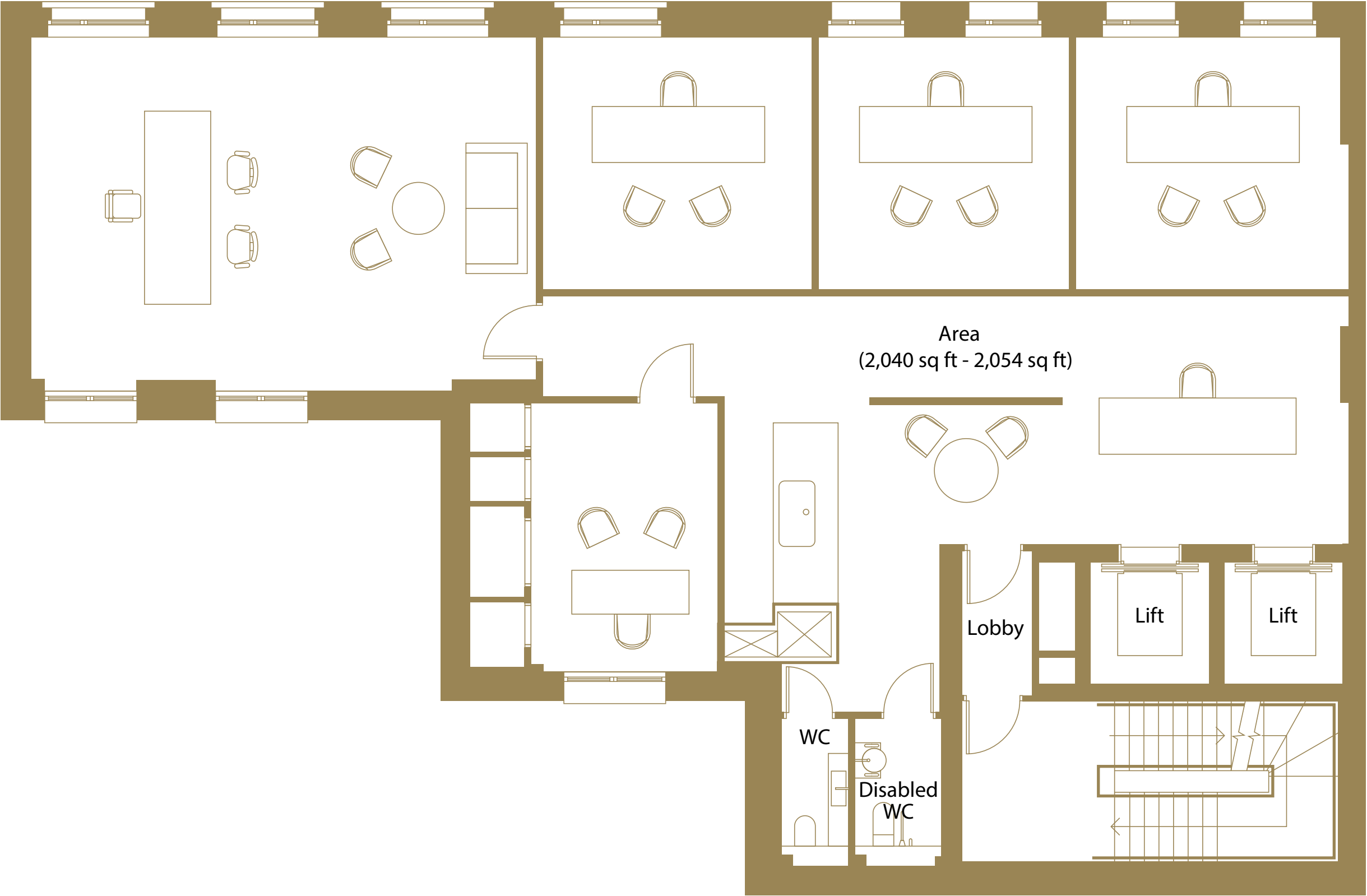


# FIRST - FOURTH FLOOR

(INDICATIVE EXECUTIVE OFFICE LAYOUT)

- Area: 2,040 - 2,054 sq. ft
- Floor to ceiling height: 2.6m (Cat A finish)
- Available as Cat A or shell and core
- Bronze surrounds and frames to windows
- Recessed spotlights and recessed strip lighting
- Two WCs on each floor
- Two eight-person lifts with secure fob access, brushed bronze panels and mirror, natural stone flooring and a fully lit diffused feature panel
- Full air conditioning with zone temperature control
- Access to dumb waiter

Brook Street



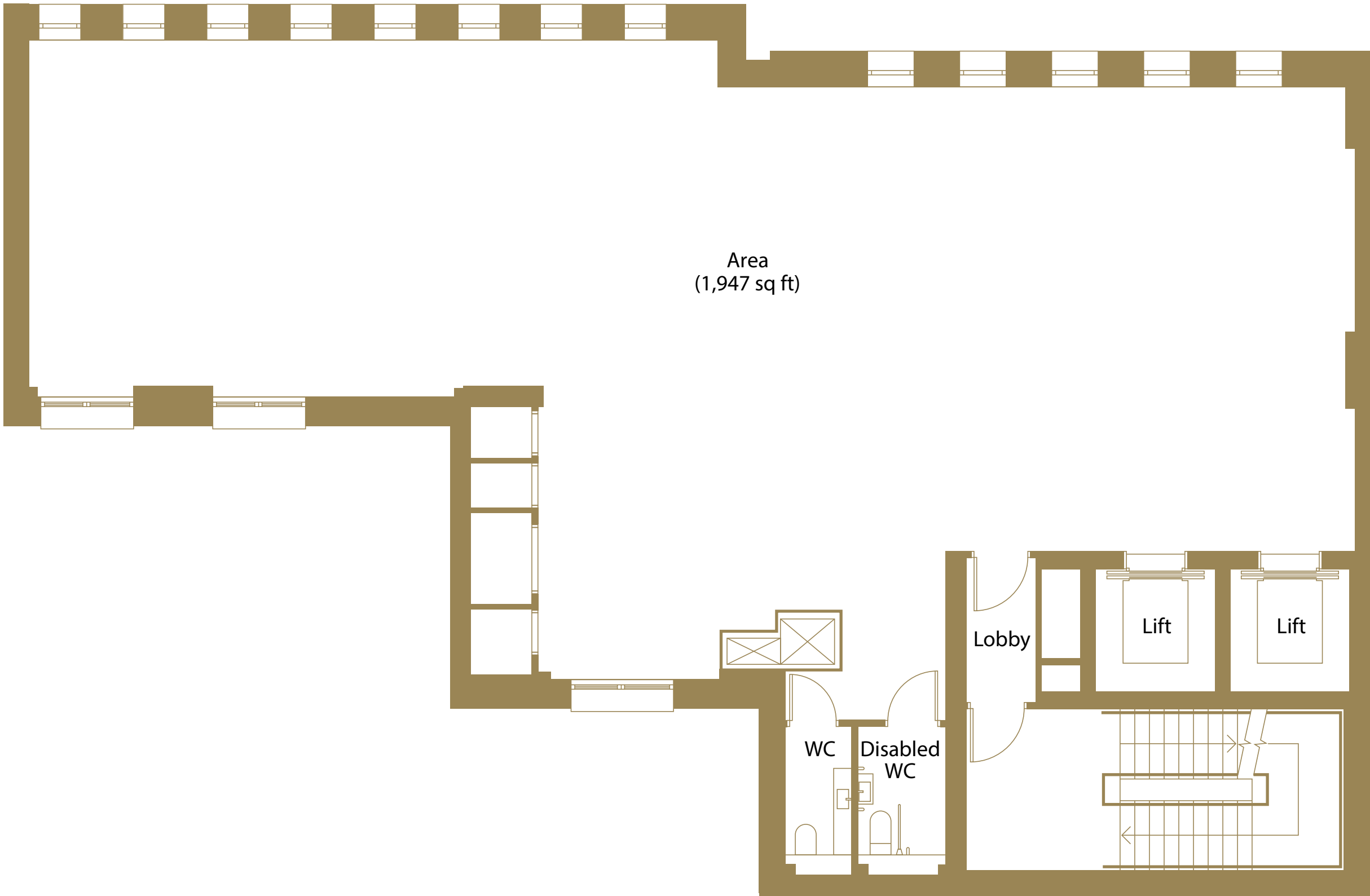
- 5 x large executive offices
- 1 x reception with waiting area
- 1 x tea point



# FIFTH FLOOR

- Area: 1,947 sq. ft
- Floor to ceiling height: 2.6m (Cat A finish)
- Available as Cat A or shell and core
- Bronze surrounds and frames to windows
- Recessed spotlights and recessed strip lighting
- Two eight-person lifts with secure fob access, brushed bronze panels and mirror, natural stone flooring and a fully lit diffused feature panel
- Full air conditioning with zone temperature control
- Two WCs
- Access to dumb waiter

Brook Street

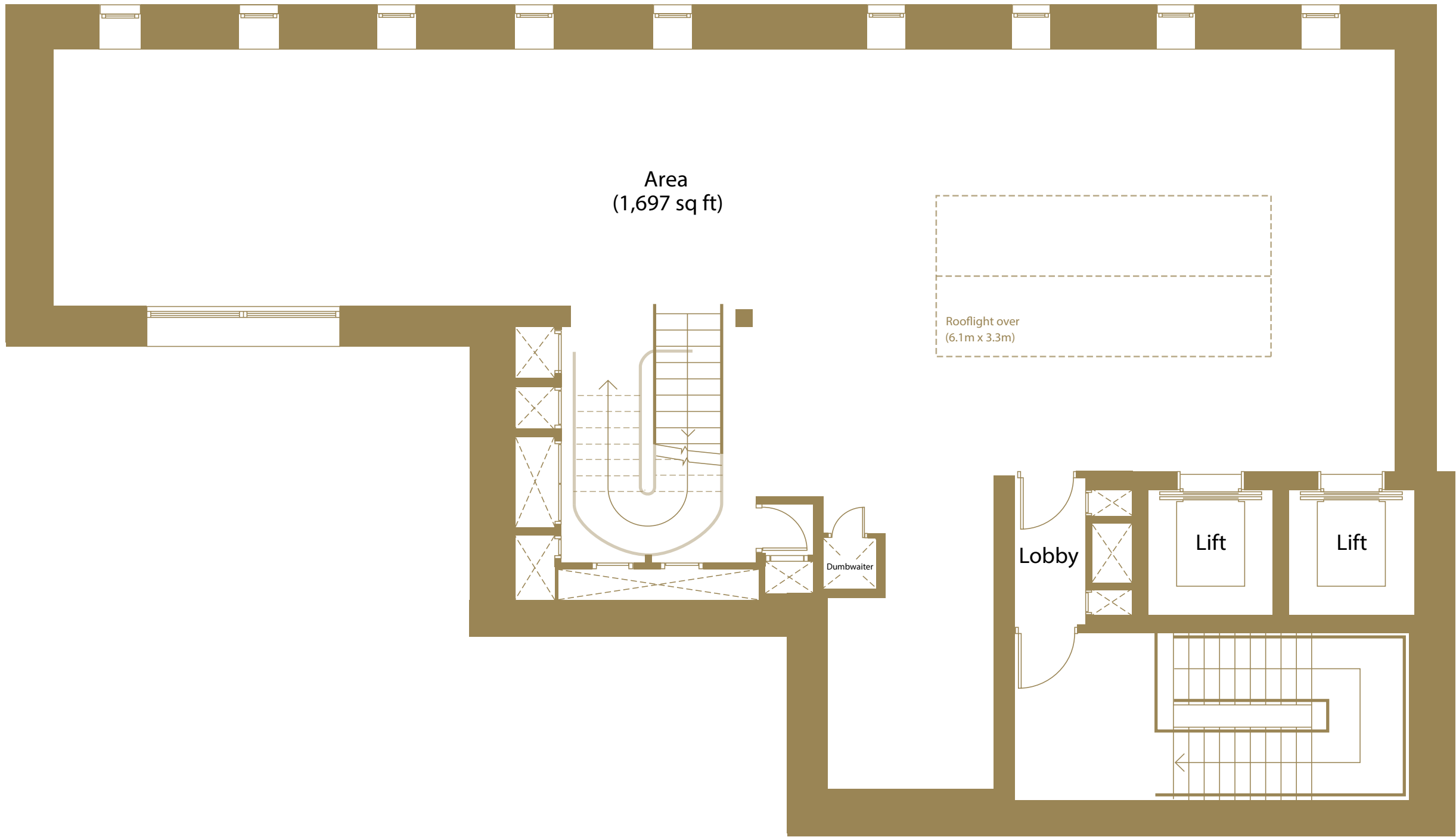




# SIXTH FLOOR

- Area: 1,697 sq. ft
- Floor to ceiling height: 2.5m - 2.64m (Cat A finish)
- Available as Cat A or shell and core
- Bronze surrounds and frames to windows
- Recessed spotlights and recessed strip lighting
- Two eight-person lifts with secure fob access, brushed bronze panels and mirror, natural stone flooring and a fully lit diffused feature panel
- Full air conditioning with zone temperature control
- 5m x 2.8m openable rooflight
- Access to dumb waiter

Brook Street



# SEVENTH FLOOR

- Area: 1,197 sq. ft
- Floor to ceiling height: 2.5m (Cat A finish)
- Available as Cat A or shell and core
- Bronze surrounds and frames to windows
- Recessed spotlights and recessed strip lighting
- Two eight-person lifts with secure fob access, brushed bronze panels and mirror, natural stone flooring and a fully lit diffused feature panel
- Full air conditioning with zone temperature control
- Access to dumb waiter
- 8m x 2m lantern rooflight
- 777 sq ft private terrace with moving glazed balustrade

Brook Street

